



ELIM COMMUNITY

GOLFLANDS CAMPUS JUNIOR YEARS

FORTNIGHTLY NEWSLETTER

Kia ora Parents/Caregivers & Whānau,

A big thank you to all our dads, fathers and special men in our lives who attended our Father's Day assembly last Friday. What a privilege it was to celebrate and honour them at our special assembly. A special thanks to Mr Len Buttner for being our guest speaker and for encouraging our fathers to speak life and blessing over their children's lives.

Revelation 7:9 (NIV)

"After this I looked before me and there was a great multitude of people that no one could count, from every nation, tribe, people and language, standing before the throne and before the Lamb".

Parents are the backbone of any family. They are the source of endless love and support their entire lives, for their children! Thank you so much for supporting our school during Cultural Week and for modelling what it means to be a community that serves one another with love. They say 'it takes a village to raise a child' and we are grateful that each parent is part of our Elim village. You help to build our Elim community, valuing all parts of what each student, family and staff member brings to school.

We want to thank each and every parent who volunteered to come into school during our cultural week to share their culture with our students. It was great to have experts encouraging and motivating our students to learn more about and value each other's culture. We honour and bless you for your commitment to making our Cultural Week such a tremendous success!

As we are fast approaching the end of Term 3, we ask our students to continue demonstrating our school's kotahitanga values: manaakitanga (respect), maiā (courage), pukuahuwhenua (diligence) & aroha (kindness). Let's finish well with respectful for ourselves and others, wearing our school uniform proudly, giving our best efforts in all areas of learning and supporting each other.

We look forward to seeing our students show their best dance moves at the Junior Years Glam Disco tonight and our annual Book Week in Week 9! Keep a close eye on all the information you need to know about the Book Fair, Book Parade and our final school events for Term 3.

God bless you!

Mrs Brieta Groenewald

Deputy Principal (Golflands Campus Junior Years)

TERM 3 UPCOMING EVENTS

HPPA NETBALL TOURNAMENT
14 SEPTEMBER

SECKA KAPA HAKA FESTIVAL
14 SEPTEMBER

BOOK WEEK & BOOK FAIR
11-15 SEPTEMBER

BOOK CHARACTER PARADE
15 SEPTEMBER 9:30AM

MUFTI DAY
20 SEPTEMBER

YEAR 3 & 4 SCIENCE CHALLENGE
20 SEPTEMBER

HPPA MANDARIN & CANTONESE
SPEECH COMPETITION
21 SEPTEMBER

WINNING HOUSE MUFTI DAY
22 SEPTEMBER

TERM 3 ENDS
FRIDAY 22 SEPTEMBER 3PM

TERM 4 COMMENCES
MONDAY 9 OCTOBER

BOOK WEEK IS HERE!

Our wonderful Book Week is next week from 11 - 15th September. We will be hosting the Scholastic Book Fair in our Library.

It will be open to parents/families every morning from 08:30 – 09:30am and again in the afternoons from 02:30 – 03:30pm.

Please come and have a look!
There are some fabulous books at reasonable prices.
There is also cute stationery available.

Now is a great time to start stocking up for birthday or Christmas presents. I am also still looking for parent helpers.

If you are available to help at the times mentioned above, please could you either pop in and see me, or email me at Claire.galbraith@elim.school.nz.



THE BOOK PARADE!

On Friday 15th September, our annual Book Parade event is happening in the Golflands Campus Hall at 9:30am. All Junior Years students are invited to participate by dressing up as a character from a beloved book they enjoy reading! You'll also get to witness many of our teachers transform into book characters as well! To participate in the event, all students who dress up must bring the physical book which their character is from with them. Parents and families are all welcome to come and witness the exciting event hosted by our beloved Librarian extraordinaire, Mrs Claire Galbraith.



FATHERS DAY ASSEMBLY



MARIMBA FESTIVAL

Our incredible students from both the Mt Albert and Golflands Junior Years campuses participated in the ONZA Marimba Festival at the Barfoot & Thompson Stadium on Saturday 2nd September. Our incredible Music specialist teacher, Mrs Yung Chang, led our tuned percussion groups (selected Year 5-6 students) to learn and practice a repertoire of 11 pieces of music that would eventually be performed together alongside hundreds of students from other schools across the region! It was a very happy and exciting experience for the students. They worked very hard learning these music and did a fantastic job!



CULTURAL WEEK HIGHLIGHTS

Kia ora / Talofa lava / Malo e lelei / Bula Vinaka / Kia orana / Fakaalofa lahi atu / Ni hao

Our classrooms and playground were filled with students and parents wearing vibrant colours of traditional outfits and flags to celebrate Cultural Day! Throughout the week our parent volunteers put on incredible displays to share and celebrate the different cultures represented at our school - and we are richer for it! There was everything from making wontons, lantern crafts, artefacts, traditional folk tales, games and performances. It was an opportunity for our students to show off their culture and appreciate the culture of their peers and the families they represent.

We had a special focus celebrating our Pacific Nations, Te Reo Māori, New Zealand Sign Language & Chinese Language in alignment with our Language Weeks this term.

Te Wiki o te reo Māori (Māori Language Week) is happening from 11th - 15th September. Our teachers have been giving opportunities for students to use new words in te reo Māori in classes in meaningful ways during Cultural Week.





A photograph of several children in school uniforms crossing a street at a zebra crossing. One child in the foreground is pushing a bicycle. A red circular stop sign with 'SCHOOL PATROL STOP' written on it is visible on the left. The background shows residential houses and a parked car.

IMPORTANT SAFETY NOTICE

THIS IS A COURTESY NOTICE ON BEHALF OF THE ELIM CHRISTIAN COLLEGE BOARD OF TRUSTEES TO ASSIST THE SCHOOL COMMUNITY IN TRAFFIC MOVEMENT AROUND THE GOLFLANDS CAMPUS DURING DROP-OFF AND PICK-UP TIME.

WE ARE COMMITTED TO CONTINUALLY IMPROVING THE SAFETY OF OUR CHILDREN. THROUGH OUR COLLECTIVE ACTIONS AROUND THIS MATTER, WE ENABLE POSITIVE LEARNING DEVELOPMENT FOR STUDENTS' AWARENESS OF THEIR SAFETY AND OTHERS IN THEIR COMMUNITY.

SOME TIPS TO ASSIST WITH IMPROVING ROAD USER SAFETY:

WE APPRECIATE CHILDREN BEING ON TIME TO SCHOOL BUT IF YOU ARE RUNNING LATE WITH YOUR CHILDREN, SAFETY IS STILL MORE IMPORTANT. YOU CAN SIMPLY TAKE THEM TO THE OFFICE TO SIGN IN.

PLEASE DO NOT COMPLETE U-TURNS, RATHER USE THE SIDE STREETS OR LOOP AROUND BOB CHARLES DRIVE TO GO THE OTHER WAY.

MIDDLE YEARS STUDENTS WITH SIBLINGS IN THE JUNIOR SCHOOL ARE ENCOURAGED TO USE THE SIDE ENTRANCES: SIMON OWEN AND MONTECITO PLACE. PLEASE ADHERE TO ROAD RULES IN THESE RESIDENTIAL ROADS.

IT IS AGAINST THE TRAFFIC LAWS TO PARK WITHIN 1 METRE OF A DRIVEWAY.

YOU ARE NOT PERMITTED TO PARK ON YELLOW NO-PARKING LINES.

NO DOUBLE PARKING IS PERMITTED.

NO VEHICLES ARE TO ENTER THE SCHOOL BUS BAY DURING PICK-UP AND DROP-OFF TIMES.

WE UNDERSTAND THAT IT IS MORE DIFFICULT WHEN THE WEATHER IS WET, HOWEVER PLEASE REMEMBER THAT ALL OTHER FAMILIES ARE ALSO BATTLING THE POOR WEATHER. CHILD SAFETY REMAINS THE HIGHEST PRIORITY AND SO ROAD RULES STILL MUST BE ADHERED TO. ENSURE YOUR CHILD EXITS YOUR VEHICLE ONTO THE PAVEMENT SIDE, NOT THE ROADSIDE.

ALL ADULTS AND CHILDREN SHOULD BE USING THE DESIGNATED PEDESTRIAN CROSSING TO CROSS THE ROAD SAFELY AT ALL TIMES.

COMMUNITY OF LEARNERS

Year 1 Rainbow Walking Experiment

Last week Friday the Year 1 children looked at the concept of absorption. We compared how ordinary paper and kitchen towel can soak up water. We placed a piece of writing paper and kitchen paper towel into coloured water. The writing paper was the control in our experiment. We noticed within minutes that the kitchen towel rapidly absorbed the colour water, whilst the writing paper did not. We looked at why the paper towel had better absorption compared to the piece of paper and discovered that paper towel contains cellulose which is a substance that comes from plants. We learnt that certain types of paper and cotton is made from plants. Our two take away words for this last week's Science experiment were 'cellulose' and 'absorption.' We have added these words to our Room 7 and 8 'star word' board.



COMMUNITY OF LEARNERS

Year 2 visit to SEA LIFE Kelly Tarlton's

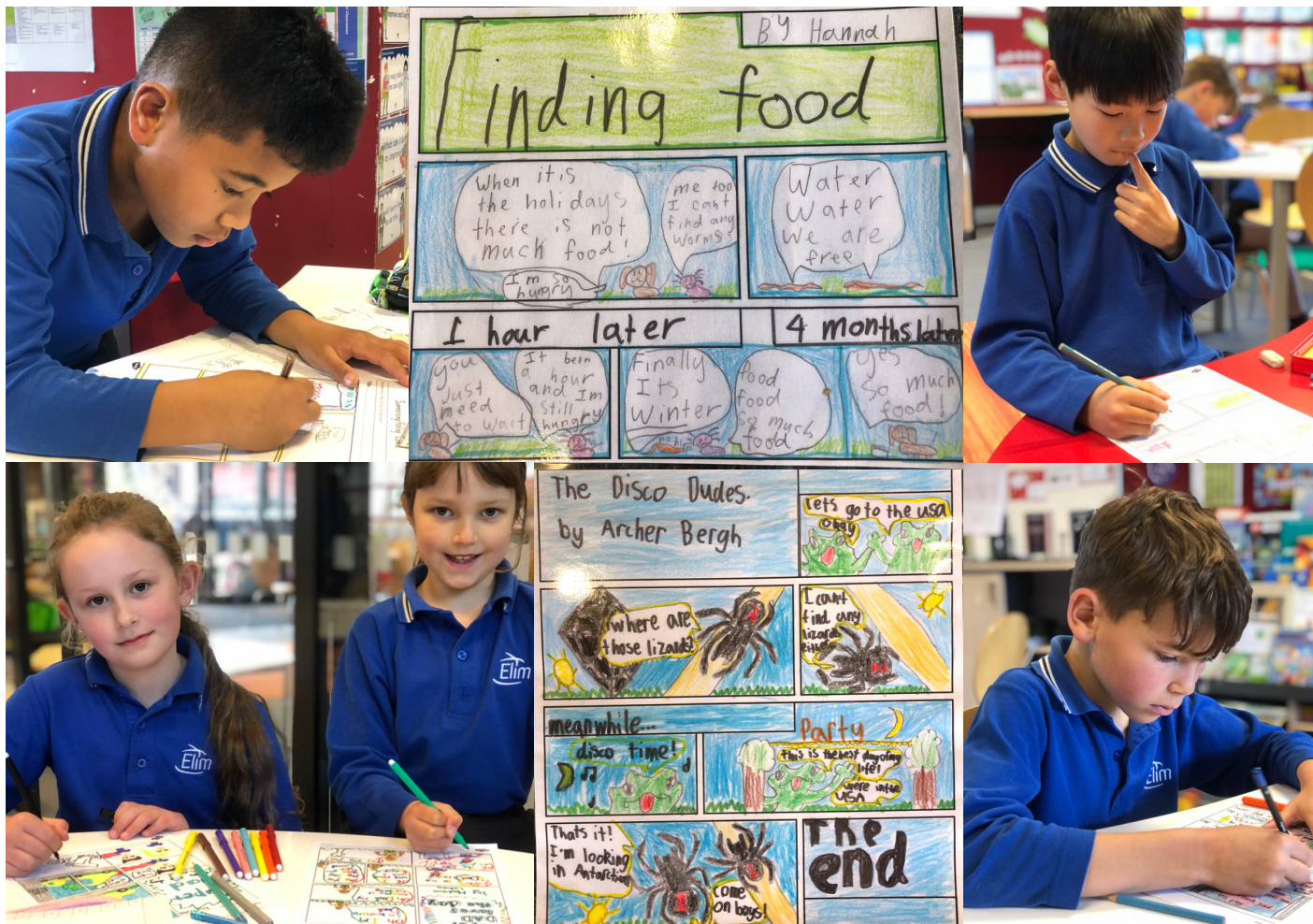
Our adventurous Year 2 Shining Stars explorers dived into the fascinating world of marine life during their recent visit to Kelly Tarlton's Aquarium! Our young scientists were on a quest to uncover the secrets of sea life, discovering amazing creatures and their unique habitats. They had a fun-filled underwater journey filled with wonder and excitement as they learn fun facts about the sea creatures and added to their knowledge bank for this term's rocky shore inquiry learning! A huge thank you to our incredible parent helpers who kept their groups happy, safe and learning throughout the day! We appreciate you!



COMMUNITY OF LEARNERS

Year 3 SuperHeroes HQ

The Year 3 students have been focusing on narrative writing this term. Room 1 has been learning about comic strips and how to hook your reader. We have laminated a handful of comic strips and placed them outside our classroom. Please come and see our comic strips outside Room 1.



On Wednesday, this week, the Year 3 students got to design a class tapa cloth. Each student cut a siapo/tapa design, creating a symmetrical motif to place on colour paper. It has been a wonderful week celebrating each student's cultural background and hear the many languages that are spoken at home.



COMMUNITY OF LEARNERS

Year 3-4 Gymnastics Skills

This term the Year 3 and 4 team have been working together developing their gymnastics skills. Gymnastics is an important part of our Physical Education programme because it helps develop body management - students learn to control their bodies while moving, it builds strength, flexibility and balance which can transfer to every other sport and helps develop gross and fine motor skills. It also develops pukuahuwhenua (diligence) as students have to practise and give constant effort to achieve and be attentive to their body and persistent in learning. The students have been learning a range of movements and static stances and are now using these to create their own gymnastics routine with a group.



COMMUNITY OF LEARNERS

Year 4 Safari Team

Year 4's have been super blessed to have Mrs Thein-Xie organise a wonton making session for us. We enjoyed wrapping the wontons but the best part of course, was eating them at the end!







COMMUNITY OF LEARNERS

Year 5-6 WERO White Water Park

The year 5-6 team have been to WERO whitewater park this week where they learned how to safely do river crossings, whitewater rafting and down river floats. This helps build water confidence and prepare for survival situations. It was an exciting adventure for all the students!



COMMUNITY NOTICES

 UNIFORM EXPECTATIONS FOR TERM 2 FOR JUNIOR YEARS STUDENTS		
Black trackpants <small>Double-layered at knees Purchased at John Russell Menswear only</small>		YES TERMS 2-3 only
Long-sleeve polo shirt		YES TERMS 2-3 only
Black tights		YES TERMS 2-3 only
Socks	BOYS and GIRLS Black knee-length socks, to be worn with closed-in shoes (no short socks)	
Shoes	Black polishable, lace-up shoes with no trim of any colour. No sneakers, canvas or street shoes.	

Term 2 & 3 Uniform Expectations:

Kotahitanga value for this term is *pukuahuwhenua* which means diligence.

Our students should all take ownership of this value by wearing our Elim uniform diligently, neatly and correctly.

Please support this by checking your child is wearing the correct uniform and refer to the Student Handbook on our school website for a complete guide of our uniform expectations.

We are very proud of our school uniform and what we represent. We thank you for continued commitment to school community throughout the school year.

Leavers form

A reminder of withdrawal of students (Year 1 to Year 12)

All formal notifications to withdraw from Elim Christian College will be required in writing, giving one term's notice. Therefore, if your child is not returning in 2024, please download a Leavers Form using the link below and email the completed form to enrolments@elim.school.nz by the end of Term 3 - Friday 22nd September 2023.

Leavers Form: <https://www.elim.school.nz/wp-content/uploads/Student-Leaving-Form.pdf>

Your assistance is greatly appreciated. Should you have any questions, please contact the Enrolment Team at enrolments@elim.school.nz.

COMMUNITY NOTICES

Kelly Club

See the new information regarding Kelly Club's after school care and holiday programme. Please note that the Holiday Programme will be run at Willowbank Primary School.

Weekly Themes:

 THEME: Te Wiki o te Reo Maori! Term 3 Week 9, 11th September 2023					
Weekly Activities Plan Kelly Club Elm					
	Monday	Tuesday	Wednesday	Thursday	Friday
3:00 – 3:10 pm	Sign In & Structured Free Time	Sign In & Structured Free Time	Sign In & Structured Free Time	Sign In & Structured Free Time	Sign In & Structured Free Time
3:10 – 3:30 pm	Intro & Afternoon Tea Noodle & Fruit	Intro & Afternoon Tea Sammies & Fruit	Intro & Afternoon Tea Spaghetti Baskets & Fruit	Intro & Afternoon Tea Sammies & Fruit	Intro & Afternoon Tea Homemade Muffins & Fruit
3:30 – 3:45 pm	Game: Blindfolded Explorers	Game: All on One Side	Game: Midnight	Game: 4 Corner Dodgeball	Game: Jedi Dodgeball
3:45 – 4:30 pm	GAME Te Reo Seaweed	DISCOVERY Parotiti	SPORT Pa Whutuporo	COOKING Paraoa Koroua	CRAFT Make Own Poi
4:30 – 4:35 pm	Pack Up	Pack Up	Pack Up	Pack Up	Pack Up
4:35 – 4:50 pm	Snack Time Raisins	Snack Time Muesli Bars	Snack Time Potato Sticks	Snack Time Baking	Snack Time Corn Thins
4:50 – 5:15 pm	Homework & Quiet Time	Homework & Quiet Time	Homework & Quiet Time	Homework & Quiet Time	Homework & Quiet Time
5:15 – 6:00 pm	Game: Bom Bom Bom & Projects	Game: Catch the Dragon's Tail & Projects	Game: Caterpillar Race & Projects	Game: Cloud Hopping & Projects	Game: Coin Rugby & Projects
E: elim@kellyclub.co.nz kellyclub.co.nz/elim P: 021 156 6256					

 TERM 3 2023 17 July - 23 September			Weekly Theme Planner Kelly Club Elm
Wk 1 17 July	Football Mania		Join the world in Football Fever!
Wk 2 24 July	Red Nose Week		Join us in supporting headliner children, with brighter futures, this Red Nose Day!
Wk 3 31 July	Show us your Skills		We know you've got some skills. Bring them to Kelly Club so you can show them off.
Wk 4 7 Aug	Green Thumbs up		Can you dig it?
Wk 5 14 Aug	Howling & Growling		Who howl? Who growl? Are they a friend or a foe? Come along and see!
Wk 6 21 Aug	Staff Choice		It's up to the Staff what we do at Kelly Club this week!
Wk 7 28 Aug	Fun Fathers!		Let's celebrate all the Fathers and Father Figures that make life fun!
Wk 8 4 Sept	Kids Choice		It's up to you what we do at Kelly Club this week.
Wk 9 11 Sept	Te Wiki o Te Reo Māori		Join us this week as we celebrate Te Wiki o te Reo Māori! Let's make the Māori language strong!
Wk 10 18 Sept	Rugby World Cup		Passing, Catching, Kicking. It's all about Rugby this week at Kelly Club!
E: elim@kellyclub.co.nz P: 021 156 6256			



General Information: We believe in giving children opportunities to do the things they love and enjoy in a supportive and encouraging environment. We provide quality childcare in safe and fun surroundings for children out of school. Our holiday programme is focused around sports, games, and outings to local attractions. Our friendly staff are passionate about working with children. They are provided with training on behaviour management techniques, first aid and activity planning/delivery.

Who can attend: Children aged 5-13 yrs

What do you need to bring: Shoes and appropriate clothing, jacket or sweatshirt, hat, drink bottle and food.

Food: Please bring plenty of packed food and drink for morning tea/lunch/afternoon tea. Lunch will be from approximately 12:30pm to 1:00pm each day.

Programme activities: Programme activities are adapted to suit children of all ages and children may be grouped by age depending on numbers. Programme activities may vary without notice dependent on weather conditions and programme numbers.

Payment details: Payment is required before the holiday programme begins. An invoice will be issued when a completed booking is received. All payment details will be included on the invoice.

Work and Income OSCAR Subsidy: Parents / caregivers that meet certain criteria will be able to access a WINZ subsidy to help cover the cost of our programme. For more information visit www.workandincome.govt.nz.

Please note: Every care will be taken to ensure the safety of your child/ren and their property. However, organisers of Kelly Club accept no liability for any injury sustained to your child/ren or any loss or damage to his/her property whilst at a programme. If your child/ren are collected late after the conclusion of the programme you will be charged \$20 per 15 minutes or part thereof.

Website: kellyclub.co.nz/willowbank
 Contact: Lily Oostendorp
 Email: willowbank@kellyclub.co.nz
 Phone: 021 195 4822
 Facebook: @KellyClubWillowbank
 Address: 56 Middlefield Drive, Dannemora

OCTOBER 2023 HOLIDAY PROGRAMME WILLOWBANK SCHOOL

WEEK 1	Mon 25 September	Tues 26 September	Wed 27 September	Thurs 28 September	Fri 29 September					
										
	DARING DETECTIVES We're going undercover for a day of detective work. We'll need our spy gadgets and undercover team to solve the intriguing mysteries.	NERF WARS! Today we battle it out in an all out Nerf War with team challenges and replenish your energy after a team bake off! Who will come out on top?	GRAVITY Join us for an awesome trip day to Gravity. Please remember a big lunch, drink bottle, shoes and a hat. \$22 extra for the day.	YEAR OF WORLD CUPS This year our top Rugby, Netball, Football and Cricket players are all competing for World Cups. Today you can join the competition as we combine all four into our own Mega Cup!	MMM-MONSTERS The monsters are casting a shadow over our Kelly Club land! Let's give them a big hug and show them all the fun that can be had!					
WEEK 2	Mon 2 October	Tues 3 October	Wed 4 October	Thurs 5 October	Fri 6 October					
										
	GINORMOUS GALAXIES It's World Space Week so prepare for blast off! All our systems are go as we embark on an astronomical adventure here at Kelly Club.	BOOK DAY Step between the pages of your favourite book and become part of the story. Where will we end up today? Come along dressed as your favourite book character and find out!	EVENT DAY Join us for an awesome trip day to the Pirate Popsicle and the Bubble Dragon show. Please remember a big lunch, drink bottle, shoes and a hat. \$22 extra for the day.	TERRIFIC TRANSPORT Moving from one spot to another can be fun, especially when you're on your bike or scooter! Safety first so remember no helmet = no ride.	SMILES ALL AROUND Putting a smile on your dial today and everyday! Let's make each other smile through acts of kindness, sharing jokes and making smiley treats!					
FULL WEEK: \$280 7am-6pm						FULL DAY: \$55 7am-6pm	SCHOOL DAY: \$45 8:30am-3pm	HALF DAY: \$35 7am-12:30pm or 12:30pm-6pm	EVENT DAY: Extra \$22 (Included in Full Week)	

OSCAR PROGRAMME SUBSIDIES AVAILABLE!
 *Conditions apply

BOOK ONLINE NOW AT www.kellyclub.co.nz

COMMUNITY NOTICES

Kelly Club Afterschool Care Information



KELLY CLUB
FUN PROGRAMMES THAT KIDS LOVE!

YOUR KIDS' HOME AWAY FROM HOME!

OUR PROGRAMMES ARE PACKED WITH EXCITING ACTIVITIES DESIGNED TO NURTURE, EDUCATE AND INSPIRE YOUR KIDS.

SPORTS COOKING ART SCIENCE + MORE!

At Kelly Club, we offer quality before- and after-school care in safe and supportive surroundings, with programmes that are tailored to your kids' ages and skill levels. Our dedicated and passionate staff are fully trained in all aspects of looking after your children.

DID YOU KNOW? CHILDCARE SUBSIDIES INCREASED IN 2023!
kellyclub.co.nz/subsidies

Check out our wide range of activities, easy online booking system, flexible payment options and childcare subsidy information at:
www.kellyclub.co.nz

We welcome:
Year 0 to 8 at Elim Christian College

After-school options:
3:00pm – 4:30pm: \$16.50
3:00pm – 6:00pm: \$23

DID YOU KNOW? CHILDCARE SUBSIDIES INCREASED IN 2023!
kellyclub.co.nz/subsidies

WHY CHOOSE KELLY CLUB?

- Supporting your school**
We share our revenues with your school to benefit your learning community.
- Quality care you can trust**
Our programmes are approved by the Ministry of Social Development and our nutritious, yummy food complies with the safety requirements of the Food Act 2014.
- Childcare subsidies**
Eligible parents or caregivers can access WINZ subsidies to help cover the cost of our programmes.
- Flexible payment plans**
Enjoy same-day booking and cancellation without penalty. We charge in arrears, so you only pay for the childcare you use.

Contact: Cassidy Tyler
Email: elim@kellyclub.co.nz
Phone: 021 156 6256
Facebook: @KellyClubElimChristian

BOOK ONLINE NOW AT www.kellyclub.co.nz

Bricks4Kidz After School LEGO STEAM Term 3 Programme Information



Scan to enrol

bricks 4 kidz

Fun hands-on STEAM learning with LEGO® bricks

Elim Christian College Term 3 - 2023

Benefits of Bricks 4 Kidz® Programmes

- Inspires growth mindset through design and critical thinking
- Reinforces science, technology, engineering, art and maths concepts
- Shapes innovative and creative thinkers for the future
- Builds self-confidence, presentation and communication skills
- Develops information processing and problem-solving skills
- Fosters teamwork and collaboration
- Sparks imagination and creativity
- Provides a safe, enriching environment to create and play

JUNIOR ROBOTICS
Coding Introduction
Combines your child's model building & engineering skills with WeDo "drag and drop" coding and robotics

TUESDAYS
Junior Robotics Level 1
Coding Introduction (Year 0-6)
Date: 18 Jul - 19 Sep (10 weeks)
Time: 3:15 – 4:15pm
Location: School Library
Term Cost: \$260
Early Bird: \$234 (Book before 17/07)

FIRST WEEK FREE

EMPOWERING TODAY'S STUDENTS TO BECOME TOMORROW'S PROBLEM SOLVERS AND INNOVATORS

Find your school at: www.bricks4kidz.co.nz/eastaukland/after-school-classes
eastaukland@bricks4kidz.com | 022 370 4936