

Elim Christian College

NEWSLETTER

8 June 2018

From the Principal

Kia Ora everyone

We are midway through Term 2 already and I note, only 3 weeks away from our BC senior student production - 'Hairspray'. All 3 campuses are thriving and operating well. Thank you parents and caregivers for your ongoing support.

Our annual drive to support World Vision is in full swing and I know, that as a school, we will make a real difference in South Sudan.

Please visit our website to get the updates you need on school life and our celebrations of learning. Our combined newsletter and website should feature the many amazing things happening at our campuses on a weekly basis.

Recent staffing news has a particular theme as we farewell Mrs Helen Bartlem, Mrs Tash Zyzalo and our enrolment officer Mrs Hayley Nieuwoudt to maternity leave!

Recently I had the privilege of spending an evening at our annual Worship Camp. To see MAC and BC college students surrendering to Jesus, honing their skills, building each other up and having so much fun spending time together with incredible staff - wow - does it get much better than this? It was really a student leadership retreat and in doing this, we are distinctly different from other schools in how we grow our students...so good!

We have commenced advertising for student places at our MAC Campus. We have 100 places available and we are encouraging parents from central and west Auckland to apply. Open days will be held at all our campuses.

Construction is progressing well at our GC Campus. With a recent tour of the inside, I can assure you these learning areas will be magnificent.

Our Proprietors continue the laborious process of consents and permissions for our MAC site. The Council have many boxes that need to be ticked and so too do those organisations representing heritage and archaeological demands. It is a wonderful site that has to be superbly master-planned.

We are so grateful for our combined facilities, our combined staff, our students and you our parents and caregivers. Each week I'm aware of many conversations taking place with you our community. Emails, phone calls, meetings - all designed to ensure our students have every opportunity to succeed. It is so good when I see students taking responsibility for their learning as they self manage and aspire to achieve the best they can on a daily basis.



Mr Murray Burton MNZM
PRINCIPAL

A handwritten signature in black ink, which appears to be 'M. Burton', written over a blue line.



IMPORTANT REMINDER: No student is permitted to carry any medication in their bags and they may not administer any medication themselves. All medication needed to be taken at school should be handed in to the various campus offices in a ziplock bag which is clearly named.

Support Elim Christian College and you'll be rewarded!



The NEW 2018 | 2019 Entertainment™ Memberships are nearly here! Pre-order to-day and you will receive **over \$200** of bonus Early Bird Offers!

ORDER ONLINE



Keri Oelofse

keri.oelofse@elim.school.nz

09 5380368ext5301

THANK YOU FOR YOUR SUPPORT!

Online ordering shoot keys have been sent home with students. Orders will only be able to be placed online. Parents can access, view and order photos directly through this system. Free delivery is available for all orders placed before midnight on 24/6/18

https://photolifeonline.co.nz/login_shoot



Hairspray JR. is the family-friendly musical piled bouffant-high with laughter, romance, and deliriously tuneful songs. Adapted from the Broadway production that won eight Tony Awards, including Best Musical, Hairspray JR. is a show that will celebrate our students' talents and bring audiences to their feet with its positive message and uproarious sense of humour.

Tickets are purchased online <https://www.trybooking.co.nz/EN>

Adult \$15

Children/students \$10

Family of 4 \$40

Family of 5 \$50



BOTANY CAMPUS

159 Botany Road

(09) 538 0368

Botany

botany@elim.school.nz

Auckland



12 of our senior Y11-13 students represented Elim at the Howick Youth Council Summit which consisted of around 90 students from East Auckland schools.

There were guest speakers from local councils as well as the opportunity for students to network and contribute ideas for community issues and projects.

Combined Botany and Golflands Campus Assembly



Y13 Economics Trip to Waihi Gold Mine



GOLFLANDS CAMPUS

94 Golfland Drive

(09) 538 0368

Golflands

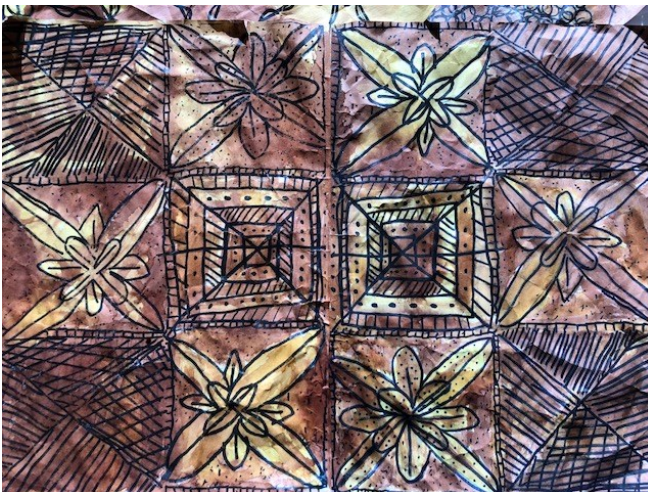
golflands@elim.school.nz

Auckland

Elim's Got Talent



Celebrating Samoan Language Week



Primary School Chess Tournament at Point View School. May 24, 2018.

Three Elim teams competed, amongst 31 teams on the day.



Team A: Darren, Hajin, Daniel and Carol.



Team C: Gaius, Elyas, Oscar and Nathan.



Nathan Wong (far left) receives a medal, with all the students who also won all 6 games of the day.



Darren Liu (5), Nathan Wong (6) and Elyas Eyou (6) gained highest number of wins of the day, for Elim.



Student librarians at Golflands Campus going about their business.



MT ALBERT CAMPUS

1 McLean Street
Mount Albert
Auckland

(09) 846 2159

mtalbert@elim.school.nz



Two students from MAC have gained the honour of having their narratives chosen for an Anthology of Short Stories by Intermediate children from around NZ after entering the intermediate Young Writers competition.

- Jamieson Horst gained 3rd place
- Daniel Tomlinson gained selection in to the Book

Both these boys wrote wonderful stories. The unveiling of the book and presentation of the prizes is in Tauranga later in June. They also receive additional coaching and a mentor who will support their writing in the future. Well done students!

By Ruth Scott

Host Families Wanted - July and August 2018

Have you ever considered hosting an International Student for Elim Christian College Mount Albert Campus?

We have three groups of International Students visiting Elim Christian College Mount Albert Campus as detailed below, and are looking for host families.

Hong Kong Group – 20 July/02 August – two students per home

Japanese Group – 04/15 August – one student per home

Japanese Group – 19 August/26 August – one student per home

.

Families need to be available and willing to spend time with their students and English needs to be the first language spoken at home.

If you would like more information and are interested in becoming a homestay family for students at Elim Christian College Mount Albert Campus please contact Aileen King our Homestay Coordinator at email homestay@elim.school.nz

Indoor Netball

For Term 4 of last year and Term 1 of this year we have had two Indoor netball teams playing on Friday nights at Action Central, Mt Roskill. The season recently finished with the Senior team of Year 8-10 students playing in the semi-finals and after a hard-fought battle they came fourth in their division. Your netball skills have improved so much and you are ready for new challenges with the Basketball and Outdoor Netball seasons beginning this term.

Well done to both teams for a great season and thanks to the parents for their support.



Feel like **LIFE's** in a *Blender?*



BLENDED FAMILY CONFERENCE

Fri 8 June 7.30pm – Sat 9 June 4.00pm
Waipuna Hotel and Conference Centre

Building a successful step-family
– encouragement, wisdom & compassion
for puzzling times. A life-changing
seminar for blended couples
to glean practical tools and ideas,
and provide excellent discussion topics.

Cost \$155.00 per couple.

www.familylife.nz Phone FamilyLife 0800 800 680